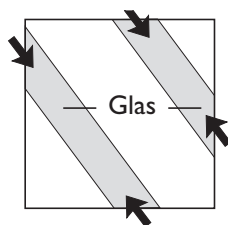
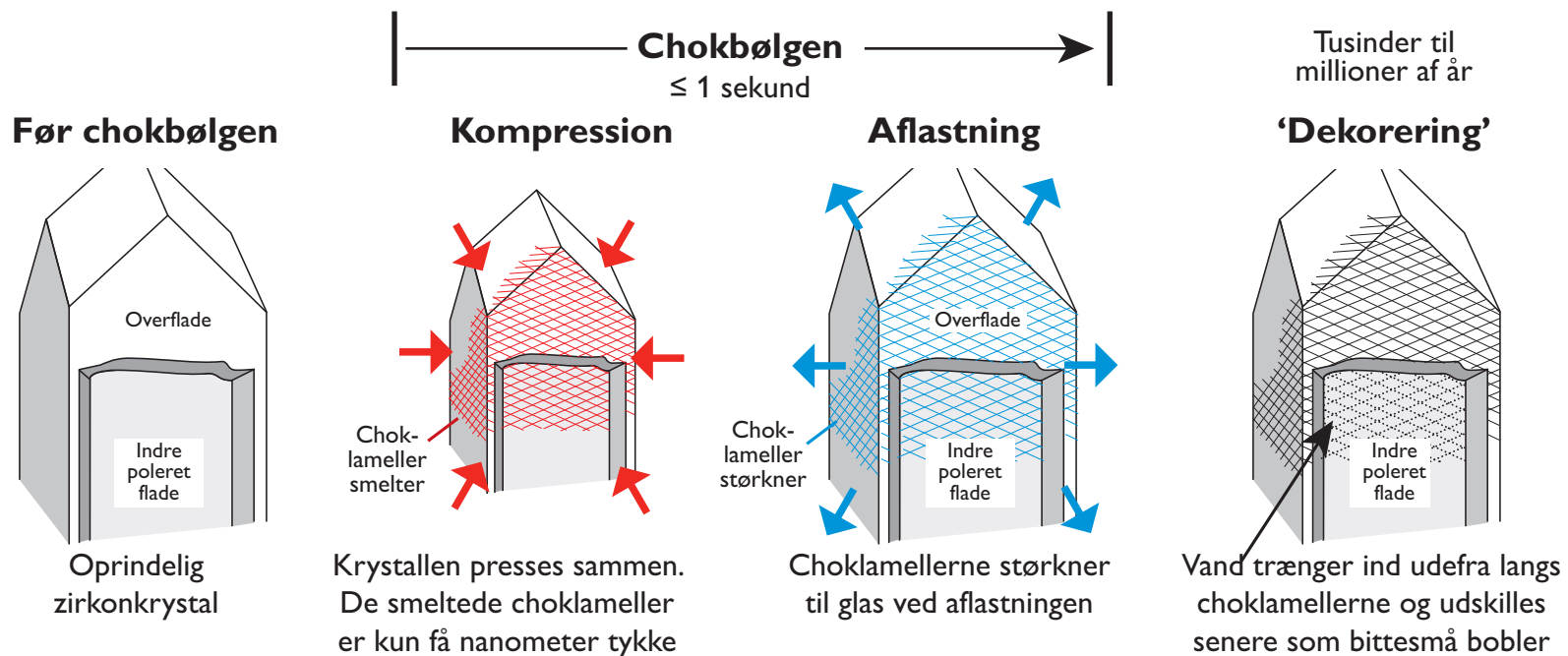
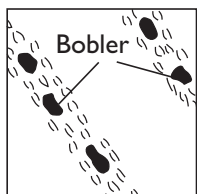


CHOKLAMELLER. Chokbølgenes ekstreme kompression og aflastning medfører lynhurtig smeltning og størkning langs visse krystalplaner

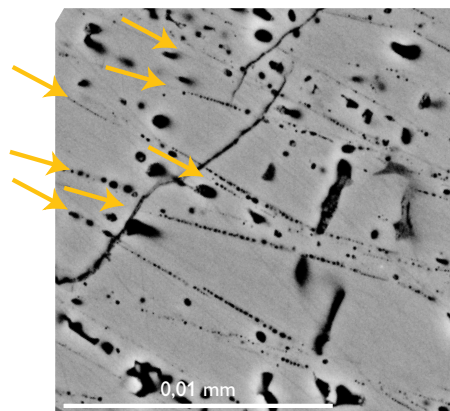


Vand trænger ind langs de glasagtige choklameller

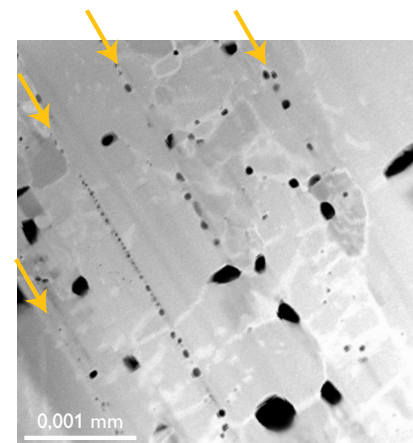


Vandbobler i nanoskala udskilles langs choklamellerne, når glasset senere krystalliserer

Skematisk model. Dannelsen af 'dekorerede' choklameller i zirkon



Ultratynde 'dekorerede' choklameller i zirkon. Mikroskala, skanning elektronmikroskopi



Ultratynde 'dekorerede' choklameller i zirkon. Nanoskala, transmissions elektronmikroskopi